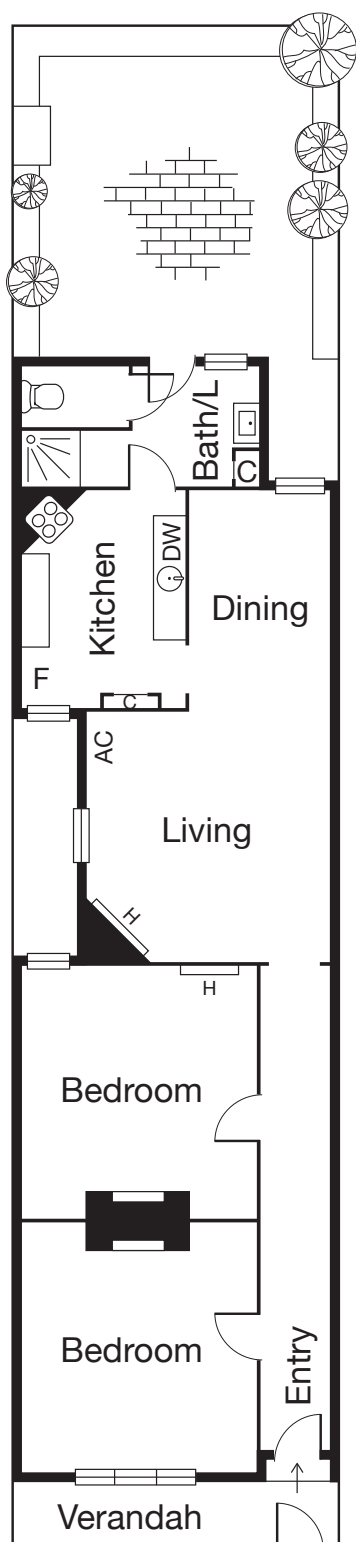


SOUTH MELBOURNE 22a Cobden Street



CAYZER

SOUTH MELBOURNE 22a Cobden Street



AFFORDABLE VICTORIAN TERRACE

- Short stroll to Albert Park Lake, St Kilda Road, public transport and schools
- Rear pedestrian right of way
- Exciting opportunity to live now or extend in the future if desired (STCA)

Recently refurbished, this solid brick Victorian is in prime location on the door step of the CBD and all the fabulous South Melbourne attractions.

Comprising: Two excellent double bedrooms (each with open fire place), central living with adjacent dining. Updated kitchen and bathroom open to delightful north-facing paved courtyard.

2 1

Auction Saturday 5th May 1pm

Inspection As advertised or by appointment

Contact Simon Carruthers 0438 811 601
Jason De Stefano 0413 292 666
Brocke Hambrecht 0466 599 724

Mel Ref 57 J1

Website 22acobdenstreetsouthmelbourne.com



Interactive Floorplan

CAYZER

Albert Park 330 Montague Street 03 9699 5999
Port Melbourne 370 Bay Street 03 9646 0812

cayzer.com.au

Every care has been taken to ensure the information contained in this document is accurate. The diagrams/plans are a representation only and are not to scale. Interested parties should seek independent legal advice. Cayzer Real Estate Pty Ltd does not accept any responsibility or liability as a result of the information provided in this document. If your property is currently listed for sale with another agent, please disregard this notice. | Cayzer Real Estate Pty Ltd | CRE20401-039 090418